



# Millbrook Close, Wixams, Bedford

Guide Price £210,000 Leasehold

2 bedroom apartment for sale

## Description

With incredible scenic views over south Bedfordshire countryside, a larger than average two double bedroom top floor apartment.

The apartment has a modern layout with a sizeable sitting-dining room open plan to a separate kitchen. There are two double bedrooms, the master bedroom is very large and has the benefit of an en suite shower room, bedroom two is served by a separate bathroom with a shower over the bath.

Wixams is a modern community situated south of Bedford. It offers excellent local amenities including schooling, a village hall, a convenience store, a garden centre, children's play areas and much more.

Transportation links are favourable via the A6 less than 1/4 of a mile away, leading to the A421 Western bypass providing excellent links to both the M1/A1.

## Tenure

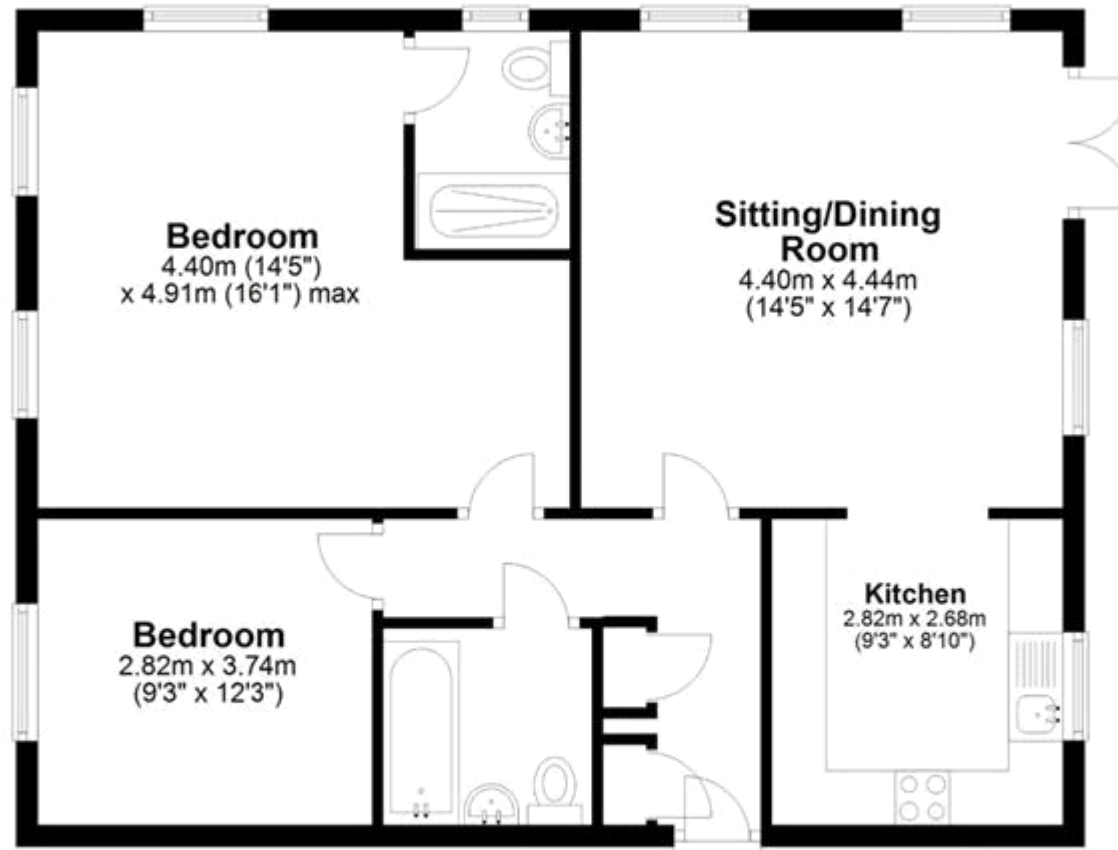
Leasehold





## Second Floor

Approx. 69.2 sq. metres (745.1 sq. feet)



Total area: approx. 69.2 sq. metres (745.1 sq. feet)

This plan is for layout guidance only and not drawn to scale unless stated. Windows and Door openings are approximate. Whilst every care is taken in the preparation of this floor plan please check all measurements, shapes and compass bearings before making any decisions upon them. © James Kendall Estate Agents  
Plan produced using PlanUp.



Viewing by appointment only  
James Kendall Estate Agents - Head Office  
194 Bedford Road, Kempston MK42 8BL  
Tel: 01234 852434 Email: [james@jameskendall.co.uk](mailto:james@jameskendall.co.uk) Website: [www.jameskendall.co.uk](http://www.jameskendall.co.uk)

**James Kendall**  
Estate Agents