



Food Store

Sparkle

COFFEE BEAN

SASS & EDGE

THE ROOM

THE BOOKMARK

Apartment 8, 3 Helene Close, Radstone Fields, Brackley

£215,000 Leasehold

2 bedroom apartment for sale

Description

Radstone Fields is an exclusive collection of 26 exceptional, luxury one and two-bedroom apartments in the historic market town of Brackley, located in West Northamptonshire.

This modern, thriving town is located between Oxford and Northampton and benefits from being served by major road networks, as well as rail links at nearby Banbury, offering convenient and direct travel to London. Radstone Fields offers an exclusive opportunity for contemporary apartment living in a rural, market town location.

Each of the outstanding apartments has been carefully constructed to provide the very best of modern living, with specifications and finishes built to an exceptional standard, whilst offering distinctive architectural design. This newly built mixed-use complex is situated in its own plot with dedicated parking for each apartment, as well as space for shared amenities. The apartments are perfectly positioned, with this rapidly expanding market town providing all local amenities right on your doorstep.

Agents Note: Development currently under construction, computer-generated images and previous development photographs have been used to indicate the finished product.

Tenure: Leasehold

Tenure

Leasehold



APARTMENT 8 & 22

2 bedroom apartment

A luxury 2 bedroom apartment situated on the left-hand side of the complex, with views to the rear of the property. This stunning home comprises 2 double bedrooms, with the master bedroom featuring an en suite, a family bathroom and a large, spacious open plan kitchen/living/dining room area.

KEY FEATURES

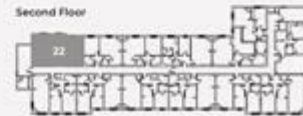
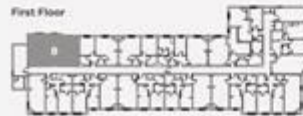
- Contemporary, stylish property
- High quality specification
- Spacious open plan kitchen/living/dining room
- Family bathroom
- 2 double bedrooms
- En suite master bedroom
- Secure parking available

FIRST FLOOR / SECOND FLOOR

Kitchen/Dining Room	4219	x	3000
	13'8"	x	9'8"
Living Room	4219	x	3043
	13'8"	x	10'0"
Bedroom 1	3613	x	3893
	11'9"	x	12'8"
En Suite	2087	x	1400
	6'8"	x	4'6"
Bedroom 2	2676	x	3450
	8'8"	x	11'3"
Bathroom	2087	x	2050
	6'8"	x	6'7"

Bedroom dimensions shown in text and feet & inches exclude an built-in wardrobe & wardrobe.

Images are for illustrative purposes only and floorplans are accurate at the time of print. Therefore variations in floorplan and exact layout may be subject to change. Please request complete specifications from Brickhill Homes. Please be aware that a tolerance of 30mm should be taken into consideration for dimensions due to plasterboard and brickwork. Measurements provided are maximum measurements information for the space.





Viewing by appointment only
James Kendall Estate Agents - Head Office
1A Garricks Court, Gold Furlong, Marston Moretaine, Bedford, Bedfordshire MK43 0XR
Tel: 01234 852434 Email: hello@jameskendall.co.uk Website: www.jameskendall.co.uk

James Kendall
Estate Agents