



Greensbury Farm Barns, Thurleigh Road, Bedford

Offers Over £475,000 Freehold

3 bedroom character property for sale

Description

Imagine sitting in your garden on a summer's day, and the only sounds you hear are those of nature – the wind bustling the leaves and the echoes of bird song in the distance. A place where you can get on your bike and cycle for miles and hardly ever see a soul; take your dog for a walk through the most beautiful countryside and completely unwind from the stresses of your day.

It isn't often that a property offering such an idyllic and rural lifestyle becomes available, and this feeling of discovering something completely special was the same for the current owners of Greensbury Farm Barns.

"Driving up the tree-lined drive leading to Greensbury Farm Barns, we instantly knew the house was special." The owners were not looking for a property when they came across the small development of modern barn conversions, but they instantly fell in love with the setting and the quality of the build.

Converted in 2014, this beautiful home combines traditional features with modern-day open plan living. The conversion has kept some of the charm and character you would expect, with beams and open brickwork being a reminder of its past as a working farm barn.

"The open plan layout downstairs is perfect for our family life and great for entertaining." The family love the spacious feel that the open plan living offers them, but still has defined spaces for dining and living. It feels cosy in the winter, and there is the option to add a wood burner to the fireplace should you wish to in the future.

If you're a lover of the outdoors, then you too are going to be amazed by the lifestyle this home offers. There is a wealth of walks, bridleways, lakes and woodlands, all accessible without getting in your car. "We will miss everything about living here. We have loved it; the walks the bike rides straight from our front door have been incredible. We feel extremely lucky that our children have had a chance of rural life, providing them plenty of places for them to explore and have adventures."

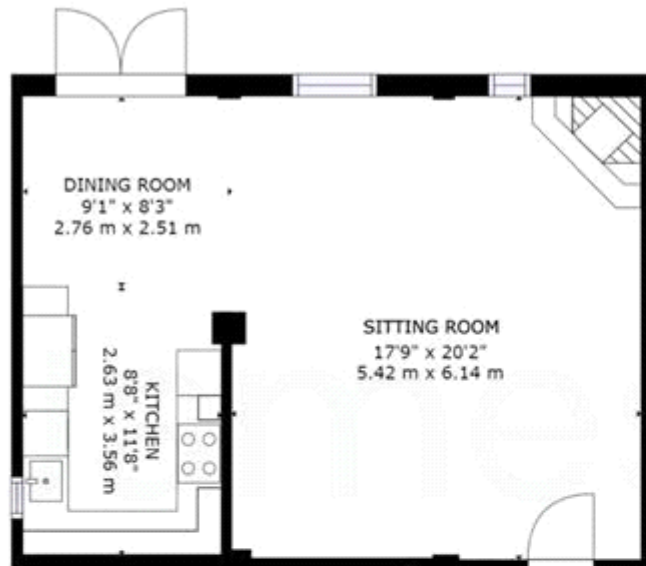


The property is located in the village of Bolnhurst, which is also home to the highly regarded Plough gastropub, which we can certainly recommend. The next village is Keysoe, where the primary school is located, it is also in the catchment area for the Sharnbrook secondary school. Keysoe is also home to the renowned International Equestrian Centre, where you can grab a coffee and cake while watching the horses. Other nearby villages include Thurleigh with farm Shop, café and Twinwoods Activity Centre containing a gym, swimming pool and more. The nearest towns are Bedford and St. Neots, which are less than 10 minutes by car, and it's here you will find all your amenities and supermarkets, both towns have fast train lines into London.

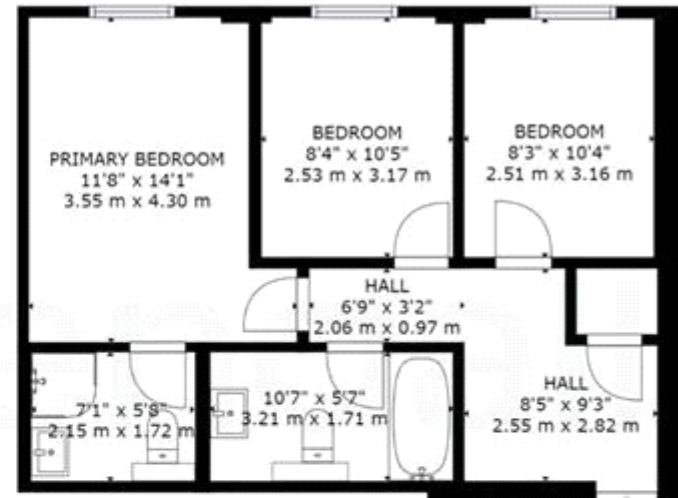
This home has brought them so much more than bricks and mortar; it has given them a lifestyle that many can only dream of.

Tenure

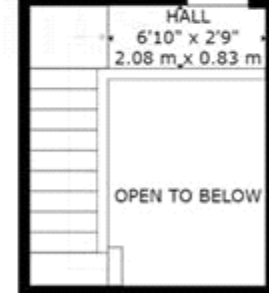
Freehold



FLOOR 1



FLOOR 2



GROSS INTERNAL AREA
 FLOOR 1: 815 sq. ft./76 m², FLOOR 2: 623 sq. ft./58 m²
 TOTAL: 1438 sq. ft./134 m²
 SIZES AND DIMENSIONS ARE APPROXIMATE, ACTUAL MAY VARY



Viewing by appointment only
James Kendall Estate Agents - Head Office
194 Bedford Road, Kempston MK42 8BL
Tel: 01234 852434 Email: james@jameskendall.co.uk Website: www.jameskendall.co.uk

James Kendall
Estate Agents