



Millfield Close, Flitwick, Bedford

Offers Over £425,000

3 bedroom bungalow for sale

Description

Offered to the market with no chain for the first time in over 30 years, a three-bedroom detached bungalow with beautiful views over Flitwick Moor.

The bungalow does need some modernisation but offers scope for the new owners to upgrade and add value, the bathroom has been modernised recently, and the driveway is block paved.

Inside, the bungalow offers versatility throughout. It has been extended to add a room to the rear of the property, which could serve as a home office or possibly be an ideal space for a home-run business with access separate from the house with a separate WC.

The main accommodation comprises three double bedrooms, a sitting/dining room, kitchen and a family bathroom.

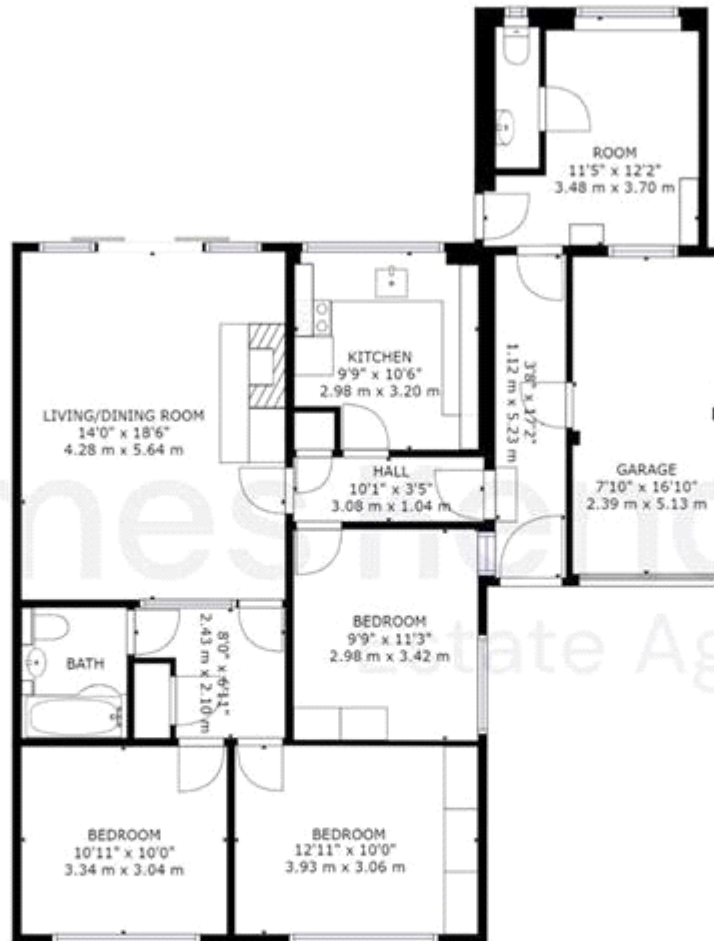
Outside, the front of the property has a lawn, and the remainder is laid to block paving, providing off road parking for 5/6+ cars. The rear has a raised terrace close to the house with steps down onto a lawned garden with far-reaching protected countryside views.

The property also has a single garage with power and light with a personal door.

We are informed The River flit mill stream to the rear of the property is protected land and is home to lots of local wildlife.

Tenure





FLOOR 1

GROSS INTERNAL AREA
 FLOOR 1: 1095 sq. ft, 102 m², EXCLUDED AREAS:
 GARAGE: 132 sq. ft, 12 m²
 TOTAL: 1095 sq. ft, 102 m²
 SIZES AND DIMENSIONS ARE APPROXIMATE, ACTUAL MAY VARY



Viewing by appointment only
James Kendall Estate Agents - Head Office
194 Bedford Road, Kempston MK42 8BL
Tel: 01234 852434 Email: james@jameskendall.co.uk Website: www.jameskendall.co.uk

James Kendall
Estate Agents